

# C9650 Series

**OKI**<sup>®</sup>  
PRINTING SOLUTIONS



**Brilliant color. Unmatched media flexibility.**

C9650n  
C9650dn  
C9650hdn



**C9000**  
Series



## Your business calls for productivity and versatility. That's what you get—and more—with the C9650 Series!

### Highlights:

- Color output at up to 36 ppm, Monochrome (black & white) at up to 40 ppm<sup>1</sup>
- Single Pass Color™ Digital technology for printing on media up to 307 gsm
- Tabloid extra/A3 (12" x 18"); prints on banner sheets up to 12.9" wide by 47.24"
- High Definition Color technology for sharp detail and rich color depth; up to 1200 x 600 dpi resolution
- High-capacity, 2-piece consumables for low Total Cost of Ownership
- 800 MHz PowerPC 750 processor
- 512 MB standard RAM, upgradable to 1 GB
- Holds up to 2,880 sheets with options
- Job Accounting software<sup>2</sup> and Web-based printer management utility standard
- Direct PDF Printing – print .pdf files without Adobe® Acrobat® or Acrobat Reader<sup>2</sup>
- Available with duplexer<sup>3</sup>, 40 GB Hard Disk Drive<sup>4</sup>, banner paper tray, and Finisher/Stapler
- 1-Year On-Site limited warranty<sup>5</sup> on printer; 5-Year limited warranty on LED printheads
- Live, toll-free technical support 24/7/365<sup>5</sup>

### Color printing with exceptional paper handling flexibility

Digital color printers from OKI Printing Solutions provide high-quality, tabloid extra (12" x 18") High Definition Color output.

With the C9650 Series Digital Color printers, you can improve the quality of your output and increase productivity—even as you lower your expenses.

These color printers are the efficient and affordable answer, especially if tabloid-size newsletters and brochures, ad layouts, large illustrations, banners or specialty media are essential parts of your business.

### Your total in-house printing solution

No more having to run down to the corporate or neighborhood copy center every time you need color documents. From postcard- to banner-size documents up to 12.9" by 47.24", you can simply print them in-house.

C9650 Series printers come with Color Matching software from OKI Printing Solutions and Auto Color Balance, to ensure that color output remains accurate and consistent from start to finish. And features like Auto Media Detect will automatically adjust the printer to your required media type.

Single Pass Color™ Digital technology and long-lasting, individually replaceable toner cartridges and image drums translate into fewer interventions—for increased productivity and a lower cost per page than competitive color printers and, especially, outside print-and-copy services. Further, C9650 Series color printers have a cost per black & white page comparable to that of most mono laser printers—so you can use them for all your business printing.

### Connectivity and more

C9650 Series printers can be connected to the network (PC- or Mac®-based) via a 10/100/1000 Base-T internal print server card. They also feature high-speed USB v2.0 and parallel interfaces.

All C9650 Series models are equipped with Job Accounting software<sup>2</sup> that allows for tracking of color and monochrome pages, the types and quantities of paper used, and a record of printing activity by individual or department.

So go on, get as creative as you like—and expect the superlative capabilities of C9650 Series Digital Color printers from OKI Printing Solutions to make you look great.

<sup>1</sup> Published performance results based on laboratory testing. Individual results may vary.

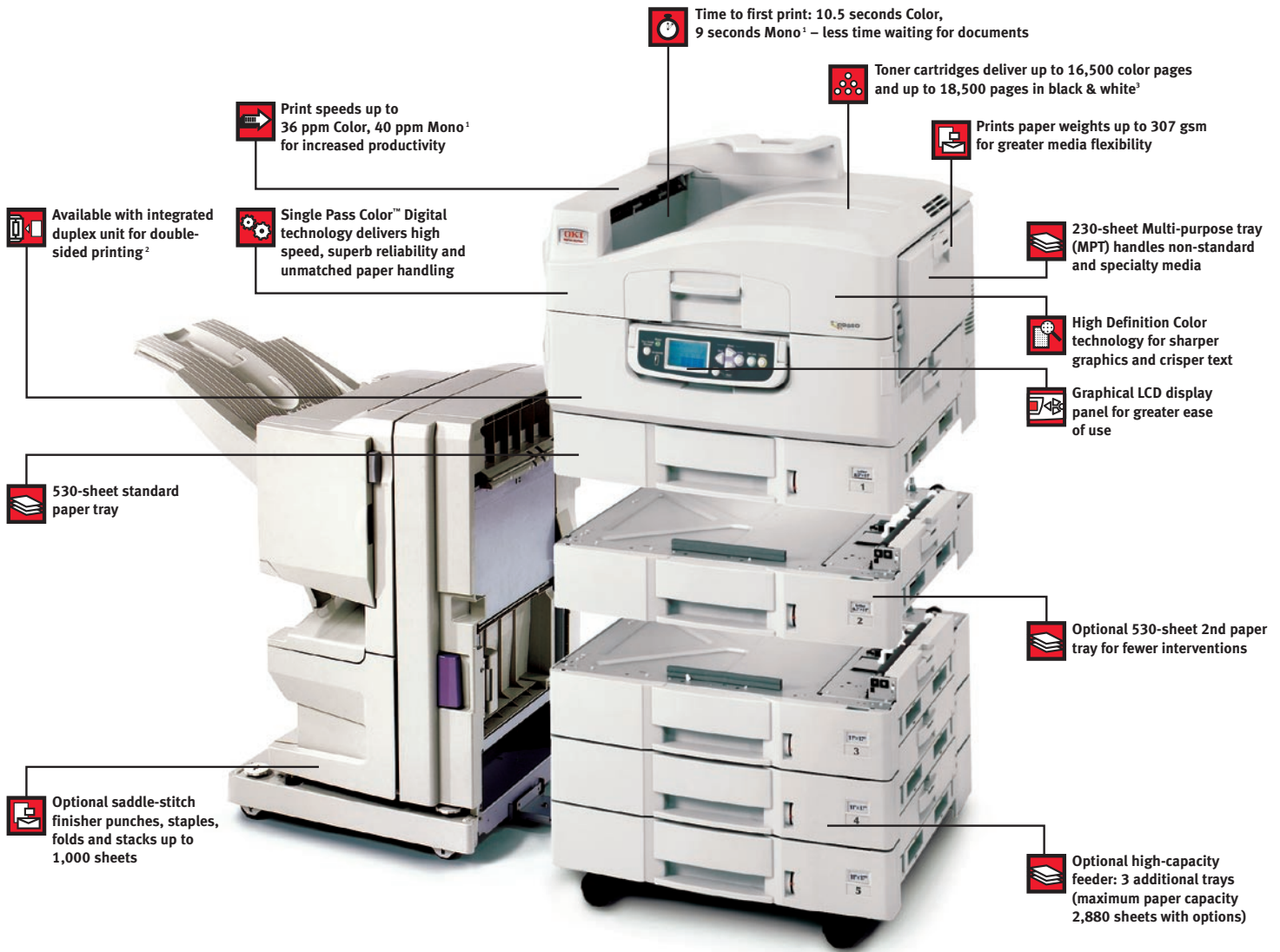
<sup>2</sup> Requires hard disk drive.

<sup>3</sup> Standard on C9650dn and C9650hdn models.

<sup>4</sup> Standard on C9650hdn model.

<sup>5</sup> Available in the U.S. and Canada only.

# C9650 Series At-a-Glance



The easy-to-read operator panel of the C9650 Series tilts up for user convenience, and displays current status of the printer. A built-in toner gauge indicates the remaining life of each toner cartridge.



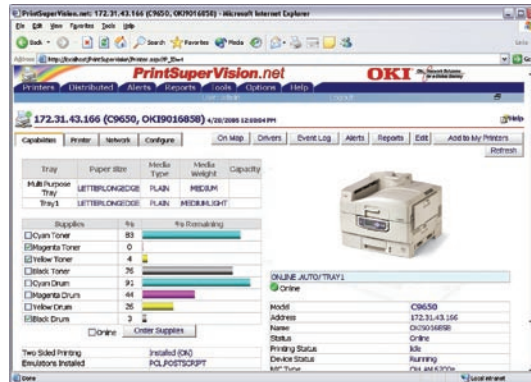
C9650 Series Operator Panel in “flat” or “down” position.



C9650 Series Operator Panel can be tilted upwards to various angles (up to 90°) for greater convenience.

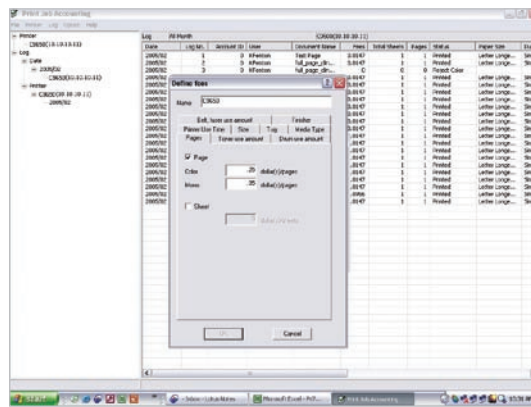
<sup>1</sup> Published performance results based on laboratory testing. Individual results may vary.  
<sup>2</sup> Standard on C9650dn and C9650hdn models.  
<sup>3</sup> Letter-size pages at 5% coverage.

## Productivity- and profit-enhancing software utilities, too.



### PrintSuperVision

Robust, scalable, Internet-based software that enables administrators to access and distribute printer data and control the functionality of all the OKI Printing Solutions printers and most other SNMP-based printers on their network.



### Job Accounting Software

Enables tracking of color and black & white printing costs, and easy monitoring and control of printer usage—with both Server and Client components.



### Color Matching Software from OKI Printing Solutions

An accurate color matching/job flow management program that enables users to match the colors on their monitor with their color output, and create ICC input/output profiles for printers, monitors and scanners.

# C9650 Series

## Specifications

### Performance

- **Print Speed:** Up to 36 ppm Color; up to 40 ppm Black
- **Time to First Page:** 10.5 sec. Color; 9 sec. Monochrome
- **Warm-Up Time:** 85 sec. or less from Power On
- **Resolution:** Up to 1200 x 600 dpi resolution with High Definition Color technology
- **Processor:** 800 MHz PowerPC 750
- **Reliability/Duty Cycle:** 150,000 pages/month

### Standard Productivity Features

- **Direct PDF Printing:** Receives and prints .pdf files in Adobe Acrobat Version 1.6 without opening an application, enhancing productivity (Windows® environment only)<sup>2</sup>
- **Job Accounting:** Track precise count of color and black & white pages printed by individual or department<sup>2</sup>
- **PrintSuperVision:** Web-based software, printer management tool
- **Storage Device Manager:** Stores and manages print data, letterheads, logos and fonts<sup>2</sup>
- **Auto Media Detect:** Automatic paper weight detection
- **Auto Paper Tray Select:** Automatically detects paper size

### Color Controls

- **Color Management:** Color Matching software and Color Management from OKI Printing Solutions, PS Gamma Adjustment, PostScript® CRD, Windows® ICM, Resident ICC Input/Output Profiles (also create, download to printer, and manage new profiles). Supports color management applications that utilize ICC profiles (Apple®, ColorSync®, Microsoft®, Adobe® applications, QuarkXPress®, CorelDraw®)
- **Ink Simulations:** SWOP®, Euroscale and others
- **Color Matching Modes:** sRGB, Monitor Simulation, Digital Camera

### Compatibility

- **Emulations:** PCL® 5c, PCL 6, Adobe PostScript 3
- **Operating Systems:** Windows – Vista®/Vista x64®/XP Home/Professional, XP Server 2003 x64; 2000 Workstation/Professional/Server/Advanced Server (all SP3 or later). Mac® – OS 9.2/OS 10.2.4 and OS X
- **Network & Protocols:** 10/100/1000 Base TX Ethernet card with internal Web server for printer and network setup and management; includes POP3/APOP, SMTP, Mail client for submission of print jobs and for retrieval of print jobs; major network protocols supported – TCP/IP, NetBIOS, EtherTalk. TCP/IP includes ARP, IP, ICMP, TCP, UDP, FTP, TELNET, HTTP(IPP), BOOTP, DHCP, SNMP, DNS, TLS, JetDirect protocols; Netware includes 3.x, 4.x, and 6 with full NDS and NDPS support – PServer, NDPS supported via dedicated OKI NDPS Gateway

### Memory

- **Standard RAM:** 512 MB
- **Maximum RAM:** 1,024 MB
- **Flash Memory:** 4 MB standard
- **Hard Disk Drive:** 40 GB (standard on C9650hdn, optional on C9650n and C9650dn)

### Interface

- **Standard Connectivity:** 10/100/1000 Ethernet, High-speed USB v2.0, Parallel



## OKI DATA AMERICAS, INC.

**USA**  
2000 BISHOPS GATE BLVD.  
MOUNT LAUREL, NJ 08054-4620  
TEL: 800.OKI.DATA (800.654.3282)  
FAX: 856.222.5320

**CANADA**  
2735 MATHES  
MISSISSAUGA  
TEL: 905.238.  
FAX: 905.238.

## WWW.OKIPRINTINGSOLUTIONS.COM

Specifications are subject to change without notice.


© 2007 Okidata Americas, Inc. OKI Reg. T.M., M.D. M.R., OKIcare, OKILan Reg. T.M., Okidata Data Corp. SynFlex T.M., Okidata Americas, Inc. SWOP T.M., SW Windows NT Reg. T.M., Vista T.M., Microsoft Corp. PCL, Reg. T.M., Hewlett-Pack T.M., Pantone, Inc. QuarkXPress T.M., Quark, Inc. CorelDraw Reg. T.M., Corel Co. T.M., MetaFrame, MetaFrame XP Reg. T.M., Citrix Systems, Inc. USB-Logo T.M.

Printed in the USA

Color,  
Printing for documents


Color cartridges deliver up to 16,500 color pages  
or up to 18,500 pages in black & white<sup>3</sup>


 Prints paper weights up to 307 gsm  
for greater media flexibility

 230-sheet Multi-purpose tray  
(MPT) handles non-standard  
and specialty media

 High Definition Color  
technology for sharper  
graphics and crisper text

 Graphical LCD display  
panel for greater ease  
of use

 Optional 530-sheet 2nd paper  
tray for fewer interventions

 Optional high-capacity  
feeder: 3 additional trays  
(maximum paper capacity  
2,880 sheets with options)



Control Panel in "flat" or "down" position.



Control Panel can be tilted upwards  
to 90° for greater convenience.

## Unmatched media flexibility: print letterhead, card stock, even 4-foot banners – up to 307 gsm!

Introducing the Signage Media Collection from  
OKI Printing Solutions. The C9650 Series prints  
them all—beautifully!



**Premium Card Stock**  
3 different weights;  
uniformly smooth surface

**SynFlex™ Paper**  
Water-resistant and  
tear-resistant



**Bright White  
Proofing Sheets**  
In 8.5" x 11", 11" x 17" (tabloid)  
and 12" x 18" (tabloid-extra)



**Banner Paper**  
12.9" x 35.4" or 8.5" x 35.4" –  
ideal for retail signage

## Banner Paper Tray now available for C9650 Series Printers

This tray, specifically created for long banners, easily  
installs on the printer. Extending from the multi-purpose tray,  
it allows the automatic feeding of up to 20 sheets of 32 lb.  
banner paper. For added convenience, the tray also supports  
the finished banners as they exit the printer.

For more information or to order a Banner Paper Tray or any item from  
the Signage Media Collection, call 1.800.OKI.DATA (800.654.3282).

# C9650 Series

## Specifications

### Performance

- **Print Speed:** Up to 36 ppm Color; up to 40 ppm Mono<sup>1</sup>
- **Time to First Page:** 10.5 sec. Color; 9 sec. Mono<sup>1</sup>
- **Warm-Up Time:** 85 sec. or less from Power On
- **Resolution:** Up to 1200 x 600 dpi resolution with High Definition Color technology
- **Processor:** 800 MHz PowerPC 750
- **Reliability/Duty Cycle:** 150,000 pages/month

### Standard Productivity Features

- **Direct PDF Printing:** Receives and prints .pdf files through Version 1.6 without opening an application, enhancing productivity (Windows<sup>®</sup> environment only)<sup>2</sup>
- **Job Accounting:** Track precise count of color and mono pages printed by individual or department<sup>2</sup>
- **PrintSuperVision:** Web-based software, printer management tool
- **Storage Device Manager:** Stores and manages forms, letterheads, logos and fonts<sup>2</sup>
- **Auto Media Detect:** Automatic paper weight detection
- **Auto Paper Tray Select:** Automatically detects paper size

### Color Controls

- **Color Management:** Color Matching software and Color Correct from OKI Printing Solutions, PS Gamma Adjuster, PostScript<sup>®</sup> CRD, Windows<sup>®</sup> ICM, Resident ICC Input/Output Profiles (also create, download to printer, and manage new profiles). Supports color management systems that utilize ICC profiles (Apple<sup>®</sup>, ColorSync<sup>®</sup>, Microsoft<sup>®</sup> ICM, Adobe<sup>®</sup> applications, QuarkXPress<sup>™</sup>, CorelDraw<sup>™</sup>)
- **Ink Simulations:** SWOP<sup>®</sup>, Euroscale and others
- **Color Matching Modes:** sRGB, Monitor Simulations, Digital Camera

### Compatibility

- **Emulations:** PCL<sup>®</sup> 5c, PCL 6, Adobe PostScript 3<sup>™</sup>
- **Operating Systems:** Windows – Vista<sup>®</sup>/Vista x64; XP Home/Professional, XP Server 2003 x64; 2003 Server; 2000 Workstation/Professional/Server/Advanced Server (all SP3 or later). Mac<sup>®</sup> – OS 9.2/OS 10.2.4 and higher.
- **Network & Protocols:** 10/100/1000 Base TX Ethernet card with internal Web server for printer and network card setup and management; includes POP3/APOP and SMTP Mail client for submission of print jobs and for alerts. All major network protocols supported – TCP/IP, Netware and EtherTalk. TCP/IP includes ARP, IP, ICMP, TCP, UDP, LPR, FTP, TELNET, HTTP(IPP), BOOTP, DHCP, SNMP, DNS, SSL/TLS, JetDirect protocols; Netware includes 3.x, 4.x, 5.x and 6 with full NDS and NDPS support – PServer, RPrinter, NDPS supported via dedicated OKI NDPS Gateway.

### Memory

- **Standard RAM:** 512 MB
- **Maximum RAM:** 1,024 MB
- **Flash Memory:** 4 MB standard
- **Hard Disk Drive:** 40 GB (standard on C9650hdn, optional on C9650n and C9650dn)

### Interface

- **Standard Connectivity:** 10/100/1000 Ethernet, High-speed USB v2.0, Parallel

### Paper Handling

- **Standard Input:** 760 sheets (530-sheet universal tray + 230-sheet multi-purpose tray)
- **Optional Input:** 2nd/3rd universal tray (530 sheets each); High-Capacity Feeder (1,590 sheets); Banner Paper Tray (20-banner-size sheets)
- **Maximum Capacity:** 2,880 sheets (Printer + 2nd tray + High Capacity Feeder + Multi-Purpose Tray)
- **Paper Sizes:** Tabloid extra (12" x 18"), tabloid (11" x 17"), legal, letter, executive, 3" x 5" index cards, 4" x 6" and 5" x 7" photo paper, A3, A4, A5, A6, B5, C5, DL, Com 10, Monarch envelopes, and banners (up to 12.9" by 47.24")
- **Paper Weight:** Trays 1 thru 5 – 17 lb. bond–80 lb. cover (64–216 gsm); Multi-purpose tray – 17 lb. bond–120 lb. cover (64–307 gsm); duplex – 20 lb. bond–65 lb. cover (75–188 gsm) for letter and tabloid sheets
- **Duplex (2-sided printing):** Standard on C9650dn and C9650hdn; optional on C9650n

### Typefaces

- **Printer Fonts:** 86 scalable PCL fonts, 1 bitmap font, 10 TrueType<sup>®</sup> fonts, 136 Adobe PostScript Type 1 fonts, OCR A/B, USPS Barcode

### Environmental

- **Size (WxDxH):** 23.6" x 24.6" x 18.5" (59.9 cm x 62.5 cm x 46.9 cm)
- **Weight:** 167.5 lb. (76.0 kg) with consumables
- **Power Consumption:** Operating – Typical 780W, Peak <1500W; Standby 200W (average); Power Save 33W
- **Acoustic Noise:** Operating – 54dB(A) or less; Standby: 42dB(A) or less; Power Save: 28dB(A) (background level)
- **ENERGY STAR:** Available on C9650dn and C9650hdn

### Warranty

- **Printer:** 1-Year limited On-Site warranty<sup>3</sup>, parts and labor
- **Digital LED Printhead:** 5-Year limited warranty

**Important Consumables Information:** This product has been designed and engineered to operate only with genuine OKI Printing Solutions consumables. Use of non-genuine consumables will result in the loss of certain printer enhancements, such as Auto Color Balance and the Toner Sensor gauge.

**For more information** on Digital Color printers and supplies from OKI Printing Solutions, including OKIcare<sup>®</sup> Extended Service Programs: **1.800.OKI.DATA** (800.654.3282).<sup>2</sup>

<sup>1</sup> Published performance results based on laboratory testing. Individual results may vary.

<sup>2</sup> Requires hard disk drive (standard on C9650hdn).

<sup>3</sup> Available in the U.S. and Canada only.

<sup>4</sup> ENERGY STAR compliant.

<sup>5</sup> Estimated life at 5% coverage on letter-size paper (printers ship with 7,500-page standard toner cartridge). Yields under ISO test standard in progress.

<sup>6</sup> Estimated life, continuous printing (will vary depending on number of printed pages per job).

## Ordering Information

Description	Part Numbers	
C9650n 120V (Multilingual)	62430604	
C9650n 230V (Multilingual)	62430605	
C9650dn 120V (Multilingual) <sup>4</sup>	62430606	
C9650dn 230V (Multilingual) <sup>4</sup>	62430607	
C9650hdn 120V (Multilingual) <sup>4</sup>	62430608	
C9650hdn 230V (Multilingual) <sup>4</sup>	62430609	
<b>Options</b>		
2nd and 3rd 530-sheet Paper Tray Mechanism	42831301	
Duplex Unit	42797201	
High-Capacity Feeder	42831501	
Banner Paper Tray	42964903	
4-Tray Finisher	70050701	
5-Tray Finisher	70050801	
2-/3-Hole Punch for Finisher	42872902	
40 GB Hard Disk Drive	70050502	
256 MB Memory Expansion DIMM	70051601	
512 MB Memory Expansion DIMM	70051701	
Printer Cabinet	70050901	
<b>Supplies</b>		
<b>High-Capacity Toner Cartridges (Type C7)</b>		
Cyan Toner Cartridge	16,500 pg. <sup>5</sup>	42918983
Magenta Toner Cartridge	16,500 pg. <sup>5</sup>	42918982
Yellow Toner Cartridge	16,500 pg. <sup>5</sup>	42918981
Black Toner Cartridge	18,500 pg. <sup>5</sup>	42918984
<b>Image Drums (Type C7)</b>		
Cyan Image Drum	42,000 pg. <sup>6</sup>	42918103
Magenta Image Drum	42,000 pg. <sup>6</sup>	42918102
Yellow Image Drum	42,000 pg. <sup>6</sup>	42918101
Black Image Drum	42,000 pg. <sup>6</sup>	42918104
<b>Consumables</b>		
Fuser Kit (120V)	100,000 pg. <sup>6</sup>	42931701
Fuser Kit (230V)	100,000 pg. <sup>6</sup>	42931702
Transfer Belt	100,000 pg. <sup>6</sup>	42931601
Waste Toner Box	30,000 pg. <sup>5</sup>	42869401
Finisher Staples	15,000 count	42937601
<b>Print Media</b>		
<b>Premium Card Stock (8.5" x 11"):</b>		
60 lb. cover	250	52205601
90 lb. index	250	52205602
110 lb. index	250	52205603
<b>Bright White Proofing Sheets (32 lb.):</b>		
8.5" x 11"	500	52206101
11" x 17"	500	52206102
12" x 18"	500	52206103
<b>Ultra Gloss Paper (8 pt.)</b>		
4" x 6"	50	52208909
5" x 7"	50	52208910
8.5" x 11"	100	52208901
8.5" x 11"	250	52208902
11" x 17"	50	52208903
12" x 18"	50	52208904
Banner Paper (12.9" x 35.4")	100	52206001
Banner Paper (8.5" x 35.4")	100	52206002
<b>SynFlex<sup>™</sup> Paper (Waterproof and Tear-resistant)</b>		
8.5" x 11"	100	52205901
12.75" x 18"	100	52205904
Premium Envelopes (size #10):	100	52206301
	500	52206302



## OKI DATA AMERICAS, INC.

**USA**  
2000 BISHOPS GATE BLVD.  
MOUNT LAUREL, NJ 08054-4620  
TEL: 800.OKI.DATA (800.654.3282)  
FAX: 856.222.5320

**CANADA**  
2735 MATHESON BLVD. EAST  
MISSISSAUGA, ONTARIO L4W 4M8  
TEL: 905.238.4250  
FAX: 905.238.4421

**LATIN AMERICA**  
2000 BISHOPS GATE BLVD.  
MOUNT LAUREL, NJ 08054-4620  
TEL: 856.231.0002  
FAX: 856.222.5071

**OKI DATA DE MÉXICO, S.A. DE C.V.**  
MARIANO ESCOBEDO, 748 8<sup>º</sup> PISO  
COL. NUEVA ANZURES C.P. 11590  
MÉXICO, D.F.  
TEL: 55.5263.8780  
FAX: 55.5250.3501

**OKI DATA DO BRASIL INFORMÁTICA LTDA.**  
AV. ALFREDO EGÍDIO DE SOUZA ARANHA, 100  
BLOCO C – 4<sup>º</sup> ANDAR  
04726-170 – SÃO PAULO – SP – BRASIL  
TEL: 11.3444.3500  
FAX: 11.3444.3502

## WWW.OKIPRINTINGSOLUTIONS.COM

Specifications are subject to change without notice.

© 2007 OKI Data Americas, Inc. OKI Reg. T.M., M.D. M.R., OKIcare, OKiLAN Reg. T.M., OKI Electric Industry Co., Ltd. High Definition Color logo T.M., Single Pass Color T.M. and design Reg. T.M., OKI Data Corp. SynFlex T.M., OKI Data Americas, Inc. SWOP T.M., SWOP, Inc. Adobe, PostScript, Acrobat Reg. T.M., PostScript 3 T.M., Adobe Systems Inc. Microsoft, Windows, Windows NT Reg. T.M., Vista T.M., Microsoft Corp. PCL Reg. T.M., Hewlett-Packard Co. Mac, ColorSync Reg. T.M., Apple Inc. QuarkXPress T.M., Quark Inc. CorelDraw Reg. T.M., Corel Corp. Intel Reg. T.M., Intel Corp. ENERGY STAR Reg. T.M., U.S. EPA. USB-Logo T.M. Universal Serial Bus Implementers Forum, Inc.

Printed in the USA

MS15858/1007

**OKI<sup>®</sup>**  
PRINTING SOLUTIONS